



QX Series™ Cordless Torque Multiplier



REAL TOOLS FOR REAL WORK.™

Next-Generation Productivity.

The innovative QX Series™ Cordless Torque Multiplier will reduce your bolting time and cost, while ensuring repeatable accuracy for all torque-critical joints. Designed with a premium Norbar® gearbox and an efficient, time-tested closed-loop transducer, the Torque Multiplier offers proven quality, control and programmable configurations to maximize your productivity.

NOT JUST TORQUE CONTROL BUT *TOTAL* CONTROL.

Accuracy:

- Ingersoll Rand's closed-loop transducer control at the heart of the tool delivers precise torque and accurate, traceable results—it's precision where you need it most

Control:

- A multi-function display module allowing for quick setup and feedback on every QX Series™ tool
- User-programmable configurations such as torque, angle and gang count that reduce the number of tools needed for multiple applications

Comfort:

- Cordless and compact, the QX Series™ Torque Multiplier allows operators to move freely without the need of bulky air or hydraulic hoses, compressors, generators or powerpacks
- Tethering points to safely secure the tools

Communication:

- USB standard, wireless communication optional
- Data management, process control and the ability to adjust tool configurations (Ethernet, fieldbus and I/O capable)

Versatility:

- Fast programming that makes the tool adaptable to multiple applications
- Cordless and portable to allow operators to move freely around any workplace or environment
- HAZ TOOL Class 1 Division 2 option available
- Available in either pistol or angle configurations

QX Series™ Torque Multiplier
1000NM Pistol



QX Series™ Torque Multiplier
594NM Angle Wrench



QX Series™ Torque Multiplier
1620NM High Torque Angle Wrench



Adaptable to Your Application.



From pipeline flange bolts to truck frame assembly, the QX Series™ Cordless Torque Multiplier has the range, accuracy and configurations to tackle your bolting needs. Sharing the same IQ^V Series™ power platform with our industrial cordless and QX Series™ assembly tools, the Torque Multiplier expands our broad range of cordless bolting solutions.

Oil and Gas



- Flanges
- Heat Exchanges
- High Pressure Valves

Infrastructure



- Bridges
- Road Ways
- Steel Structures

Heavy Equipment



- Excavators
- Diesel and Gas Engines
- Construction/Truck

Wind



- Foundation Bolts
- Gearboxes
- General Maintenance

Rail



- Rail Car Maintenance
- Locomotive Assembly
- Infrastructure Installation/Maintenance

Power Gen



- Turbines
- Valves Connections and Flanges
- Generators



Precision Engineered.

Closed-loop transducer control delivers precise torque and accurate, traceable results

Premium Norbar® gearbox provides proven quality and accuracy

Optional wireless communications for process control with I/O and data collection

USB port for convenient programming and data transfer

Standard or custom reaction arms meet multiple application needs

360° adjustable handle provides operator comfort and flexibility when working on multiple joints and applications (includes 6 mm threaded port for eye hooks or other tethering points)

Proven QX Series™ brushless motor provides maximum durability

Non-contacting trigger and reverse switch maximizes durability

Ergonomic design comfortable, lightweight and balanced

Cycle status lights and audible alarm provide instant validation during each operation
Red – Above set high limit
Yellow – Below set low limit
Green – Within set range
Blue – Active alarm condition

Lithium Ion battery provides maximum run time and portability using power platform common to all Ingersoll Rand cordless families

High strength, impact resistant lens guards against damage

Haz Tool - Class 1 Division 2 certified models available

Backlit display offers quick set-up and easy to read visual feedback

Superior Communication and Control.

Ingersoll Rand doesn't just give you unprecedented technology, we give you total control of that technology. With up to eight programmable configurations per tool, the QX Series™ Torque Multiplier allows operators to transition seamlessly between different bolting applications. You'll be able to use bolting strategies individually, or combined in one strategy depending on what works best for you.

Common Bolting Strategies

Torque



Achieve desired torque within high and low limits

Angle



Achieve target rotation within high and low limits

Gang Count



Counts all rundowns to ensure all bolts have been fastened

+ If additional control is needed, Ingersoll Rand's ICS software gives you even more options to adapt to the most complicated bolting applications.

Advanced Communication Options for Process Control and Real-Time Monitoring



Process Communication Module (PCM) Features

Power Cord	BC10-CORD-US	IC-PCM-2-US	IC-PCM-2-US
Configuration		10 to 1	1 to 1
Tool Connections	Wireless tool connections	10	1
Software	ICS Connect software	•	•
Power Supply	120V AC input, 5V DC output	•	•
Communication	Ethernet to ICS	•	•
Fieldbus Options	Ethernet/IP, DeviceNet, Interbus-S, Profibus, Modbus-TCP		•
Protocols	Open Protocol, Ethernet EOR, Serial EOR		•
Printers/Devices	Serial RS232, bar code, label printing		•
I/O	8 inputs/8 outputs, with behavior assignable through ICS software, operates at 24V DC		•
I/O Power Supply	120V AC input, 24V DC output		•
Indicators	Power ON, System Ready, Wireless Activity, Ethernet Activity	•	•
Ambient Operating Conditions	0-50°C, 20/90% non-condensing humidity	•	•
Enclosure	IP52 mounted in upright vertical position	•	•
System Weight	3.0 lb (1.4 kg)	•	•
Overall Dimensions	11.5 in x 4.1 in x 8.3 in 291 mm x 103 mm x 210 mm	•	•

QX Series™ Specifications

	ft-lbs (Nm)		rpm	lbs (kg)*		in (mm)*		in (mm)		in	V	Communication
QX Series™ Pistol												
QXC2PT200NPS12	30-148	(40-200)	45	8	(3.62)	14.69	(373)	2.20	(56)	3/4"	20V	Via USB Cable Only
QXC2PT500NPS12	74-369	(100-500)	18	8	(3.62)	14.69	(373)	2.20	(56)	3/4"	20V	Via USB Cable Only
QXC2PT1000NPS12	148-738	(200-1,000)	9	12	(5.44)	16.50	(419)	3.14	(80)	3/4"	20V	Via USB Cable Only
QXC2PT1350NPS16	200-996	(270-1,350)	7	12	(5.44)	16.50	(419)	3.14	(80)	1"	20V	Via USB Cable Only
QXC2PT2000NPS16	295-1,475	(400-2,000)	5	15	(6.80)	17.80	(452)	3.14	(80)	1"	20V	Via USB Cable Only
QXX2PT200NPS12	30-148	(40-200)	45	8	(3.62)	14.69	(373)	2.20	(56)	3/4"	20V	Wireless Enabled
QXX2PT500NPS12	74-369	(100-500)	18	8	(3.62)	14.69	(373)	2.20	(56)	3/4"	20V	Wireless Enabled
QXX2PT1000NPS12	148-738	(200-1,000)	9	12	(5.44)	16.50	(419)	3.14	(80)	3/4"	20V	Wireless Enabled
QXX2PT1350NPS16	200-996	(270-1,350)	7	12	(5.44)	16.50	(419)	3.14	(80)	1"	20V	Wireless Enabled
QXX2PT2000NPS16	295-1,475	(400-2,000)	5	15	(6.80)	17.80	(452)	3.14	(80)	1"	20V	Wireless Enabled
QX Series™ Pistol Kit												
QXC2P200PS12K2	30-148	(40-200)	45	8	(3.62)	14.69	(373)	2.20	(56)	3/4"	20V	Via USB Cable Only
QXC2P500PS12K2	74-369	(100-500)	18	8	(3.62)	14.69	(373)	2.20	(56)	3/4"	20V	Via USB Cable Only
QXC2P1000PS12K2	148-738	(200-1,000)	9	12	(5.44)	16.50	(419)	3.14	(80)	3/4"	20V	Via USB Cable Only
QXC2P1350PS16K2	200-996	(270-1,350)	7	12	(5.44)	16.50	(419)	3.14	(80)	1"	20V	Via USB Cable Only
QXC2P2000PS16K2	295-1,475	(400-2,000)	5	15	(6.80)	17.80	(452)	3.14	(80)	1"	20V	Via USB Cable Only
QXX2P200PS12K2	30-148	(40-200)	45	8	(3.62)	14.69	(373)	2.20	(56)	3/4"	20V	Wireless Enabled
QXX2P500PS12K2	74-369	(100-500)	18	8	(3.62)	14.69	(373)	2.20	(56)	3/4"	20V	Wireless Enabled
QXX2P1000PS12K2	148-738	(200-1,000)	9	12	(5.44)	16.50	(419)	3.14	(80)	3/4"	20V	Wireless Enabled
QXX2P1350PS16K2	200-996	(270-1,350)	7	12	(5.44)	16.50	(419)	3.14	(80)	1"	20V	Wireless Enabled
QXX2P2000PS16K2	295-1,475	(400-2,000)	5	15	(6.80)	17.80	(452)	3.14	(80)	1"	20V	Wireless Enabled
QX Series™ Pistol Haz Lock Tool												
QXC2PT200VNPS12	30-148	(40-200)	45	8	(3.62)	14.69	(373)	2.20	(56)	3/4"	20V	Via USB Cable Only
QXC2PT500VNPS12	74-369	(100-500)	18	8	(3.62)	14.69	(373)	2.20	(56)	3/4"	20V	Via USB Cable Only
QXC2PT1000VNPS12	148-738	(200-1,000)	9	12	(5.44)	16.50	(419)	3.14	(80)	3/4"	20V	Via USB Cable Only
QXC2PT1350VNPS16	200-996	(270-1,350)	7	12	(5.44)	16.50	(419)	3.14	(80)	1"	20V	Via USB Cable Only
QXC2PT2000VNPS16	295-1,475	(400-2,000)	5	15	(6.80)	17.80	(452)	3.14	(80)	1"	20V	Via USB Cable Only
QXX2PT200VNPS12	30-148	(40-200)	45	8	(3.62)	14.69	(373)	2.20	(56)	3/4"	20V	Wireless Enabled
QXX2PT500VNPS12	74-369	(100-500)	18	8	(3.62)	14.69	(373)	2.20	(56)	3/4"	20V	Wireless Enabled
QXX2PT1000VNPS16	148-738	(200-1,000)	9	12	(5.44)	16.50	(419)	3.14	(80)	3/4"	20V	Wireless Enabled
QXX2PT1350VNPS16	200-996	(270-1,350)	7	12	(5.44)	16.50	(419)	3.14	(80)	1"	20V	Wireless Enabled
QXX2PT2000VNPS16	295-1,475	(400-2,000)	5	15	(6.80)	17.80	(452)	3.14	(80)	1"	20V	Wireless Enabled
QX Series™ Angle Wrench†												
QXX5A45T0180PS12	27-132	(16-180)	110	11.4	(4.25)	10.40	(264)	3	(76.2)	3/4"	40V	Wireless Enabled
QXX5A45T0270PS12	40-200	(54-270)	77	11.4	(4.25)	10.40	(264)	3	(76.2)	3/4"	40V	Wireless Enabled
QXX2A52T0396PS12	59-291	(79-395)	21	9.5	(3.54)	8.50	(216)	3	(76.2)	3/4"	20V	Wireless Enabled
QXX2A52T0594PS12	88-438	(119-594)	14	10.9	(4.06)	8.50	(216)	3	(76.2)	3/4"	20V	Wireless Enabled
QXX5A52T0880PS12	130-650	(180-880)	23	12.3	(4.60)	10.40	(264)	3	(76.2)	3/4"	40V	Wireless Enabled
QXX5A72T1080PS16	160-797	(216-1,080)	19	16	(5.97)	10.40	(264)	3	(76.2)	1"	40V	Wireless Enabled
QXX5A72T1620PS16	239-1,195	(324-1,620)	13	16	(5.97)	10.40	(264)	3	(76.2)	1"	40V	Wireless Enabled

*Weight and length do not include battery. Battery sold separately. †Angle wrenches available through IR Solution Centers; angle kits and Haz Loc option coming soon.



30-148 ft-lbs (40-200 nm)
74-369 ft-lbs (100-500 nm)



148-738 ft-lbs (200-1,000 nm)
200-996 ft-lbs (270-1,350 nm)



295-1,475 ft-lbs (400-2,000 nm)



27-132 ft-lbs (16-180 nm)
40-200 ft-lbs (54-270 nm)



59-291 ft-lbs (79-395 nm)
88-438 ft-lbs (119-534 nm)



130-650 ft-lbs (180-880 nm)
160-797 ft-lbs (216-1,080 nm)
239-1,195 ft-lbs (324-1,620 nm)

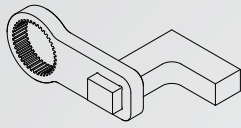
QX Series™ Torque Multiplier Kit



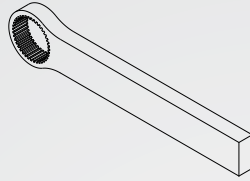
Kit includes (1) tool, (2) BL2022 5.0 Ah batteries, (1) BC1121 charger and (1) tool bag. Hard case available as a separate option.

Reaction Arms

Ingersoll Rand offers the following variety of reaction arms for different applications. Reaction arms are available in both 52 mm and 72 mm spline drives, depending on the size of the gearbox.



Cranked, 45 or 90 degrees



Straight, aluminum or steel
(multiple lengths available)

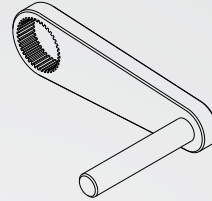
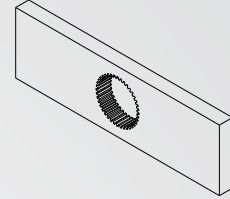
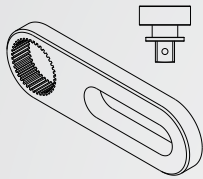


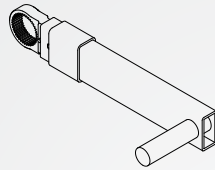
Plate and pin (multiple
lengths available)



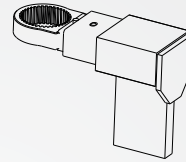
Double-sided



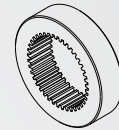
Sliding slave kit (multiple
lengths available)



Sliding peg and yoke
assembly (multiple lengths
available)



Sliding yoke, paddle and
yoke assembly (multiple
lengths available)



Blank welding ring

Custom Reaction Arm Options

Not all applications are equal — Ingersoll Rand offers custom reaction arms. Please see your certified distributor for more information.

Power Platform

All QX Series™ 20V tools are compatible with both the 2.5 Ahr and 5.0 Ahr batteries. The 5.0 Ahr is optimum for longer use applications while the 2.5 Ahr is ideal for tighter spaces and reduced weight.

All QX Series™ 40V high torque tools are compatible with the 2.5 Ahr 40V battery.

IQ^{V20} Series™ Battery
Charger 20V
BC1121



IQ^{V20} Series™ Lithium Ion
Battery Pack 20V, 2.5 Ahr
BL2012



IQ^{V20} Series™ Lithium Ion
Battery Pack 20V, 5.0 Ahr
BL2022

IQ^{V40} Series™ Battery
Charger 40V, 2.5 Ahr
BC1161



IQ^{V40} Series™ Lithium Ion
Battery Pack 40V, 2.5 Ahr
BL4011



Accessories



Protective Boots



Spring Balancer



Process Communication
Module (PCM)



Hard Case



3/4" and 1" Socket Kits



Ingersoll Rand (NYSE:IR) advances the quality of life by creating comfortable, sustainable and efficient environments. Our people and our family of brands—including Club Car®, Ingersoll Rand®, Thermo King® and Trane®—work together to enhance the quality and comfort of air in homes and buildings; transport and protect food and perishables; and increase industrial productivity and efficiency. We are a \$13 billion global business committed to a world of sustainable progress and enduring results.



www.ingersollrandproducts.com

Ingersoll Rand, IR, the IR logo, QX Series and the QX Series logo are trademarks of Ingersoll Rand, its subsidiaries and/or affiliates. All other trademarks are the property of their respective owners.

Nothing contained on these pages is intended to extend any warranty or representation, expressed or implied, regarding the product described herein. Any such warranties or other terms and conditions of sale of products shall be in accordance with Ingersoll Rand's standard terms and conditions of sale for such products, which are available upon request.

Product improvement is a continuing goal at Ingersoll Rand. Designs and specifications are subject to change without notice or obligation.